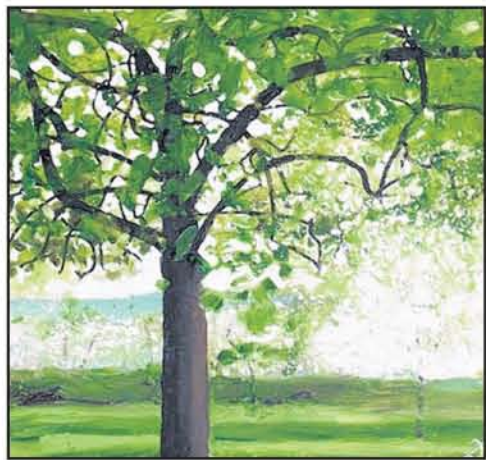


# ART

Su Carroll follows a trail of creativity around Bideford and peeps inside a 200-year-old working cider barn



Green Tree by Joe Webster

## Rustic setting adds an extra dimension

IT'S not just the Bideford Bay Creatives (*see main story*) who are exhibiting in unusual locations.

Two artists from the Exeter area are showcasing their work this weekend inside a 200-year-old working cider barn.

Although they have been friends for a while, this is the first time that painter Joe Webster and sculptor Dan Pooley have exhibited together.

Joe has spent the past year painting locations around the farm, capturing the blossom in the orchards and the light playing in the leaves. He says the barn – although not a normal gallery – is ideally suited to a show of his work.

“This space is exciting for me because it shares a purpose with the landscape and orchards that I have been capturing across the last year,” he says.

Dan Pooley’s work is more of a retrospective showing how he has developed over the years from his flying machines of around 15 years ago, through sculptures to the more recent bronze and figurative pieces.

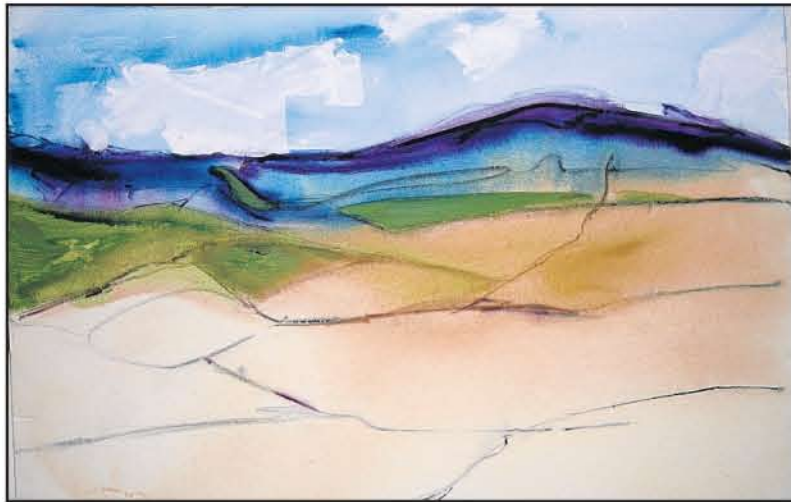
“I’ve enjoyed setting up this gallery because the rustic character of the cider barn and press complement that of my figurative sculpture and automata,” he says.

“It is such a beautiful space. Setting it up has been a real pleasure. It’s very exciting.”

● *The Cider Barn Gallery is located on Halstow Farm (Grays Cider) between Tedburn St Mary and Dunsford. It is open tomorrow and Sunday between 10am and 4pm.*



Sculpture by Dan Pooley



Janis Glover’s paintings (left) are in Cafe Life on The Quay; photographs by Sarah Gallifent – such as Cordyline (right) – can be seen in Cafe Crème, Mill Street



# Cultural showcase gets out in town

ART is coming to town... literally... when Bideford Bay Creatives launch their first project next month. Culture Show is a dynamic arts project co-ordinated by the new group which has only been in existence since July.

In October they will flood the town of Bideford with all manner of creative work – different artists, different media and different venues.

Culture Show will include photography, paintings, prints, sculpture, carnival costume, jewellery, glass, ceramics, multimedia and millinery, all produced by creative practitioners who are members of Bideford Bay Creatives and live in the area.

As well as the usual cafes, bars, restaurants, galleries and library venues, you’ll be able to spot art work in less familiar surroundings.

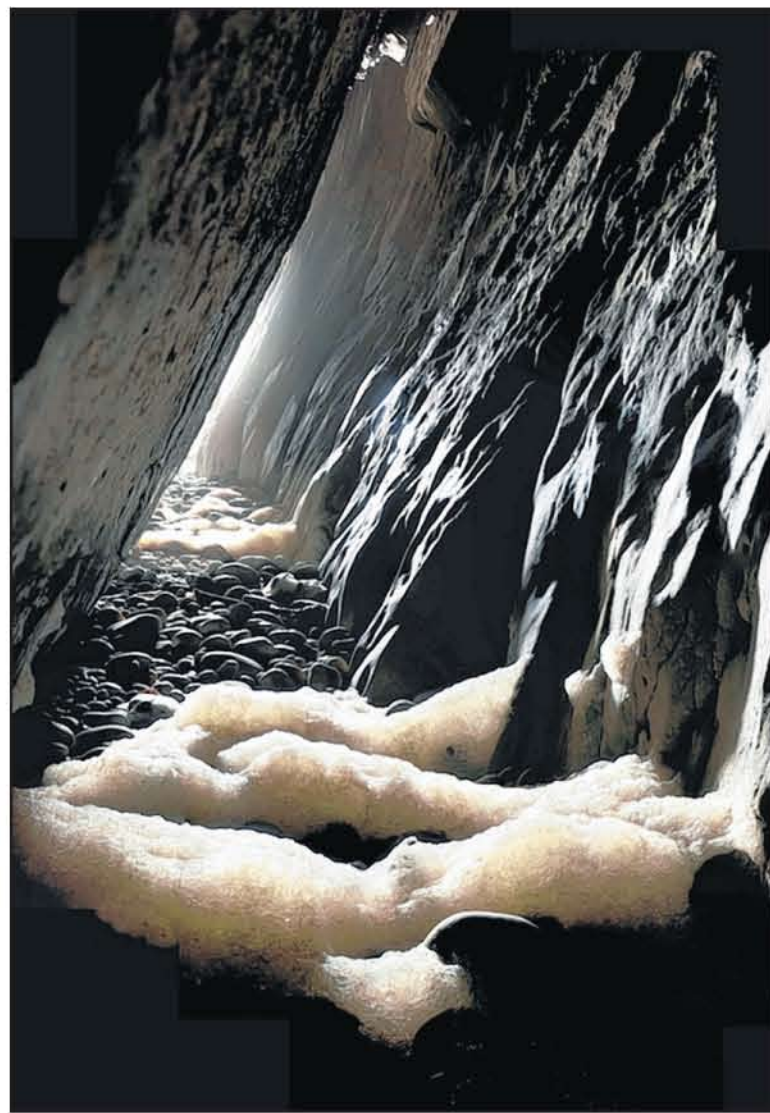
Photographer Dave Green is exhibiting at Complete Computing in Old Town and in the rather austere surroundings of Elliott’s car showroom and garage, off Kingsley Road you will find the carnival costumes and textiles of Sue Russell and the sculptural glass and ceramics of Simon Moore.

In the window of Britannia you will find the hats and fascinators of The Artful Hat Company.

At Bideford Library in New Road you can see jewellery from Flambeaux Jewellery and Kim Styles plus Ally Reed’s multimedia and paintings.

The aim of this ambitious project is to bring the arts to the community, for work to be seen in alternative spaces – not just in art galleries – and Culture Show presents a varied mixture of work.

The whole community and local



Long Cave, Baggly Point, North Devon, by Dave Green

businesses have got behind the venture and much of the work is for sale. All of it is there to enjoy.

And the clever artists at Bideford Bay Creatives have come up with a great idea for seeing the work.

There’s a Culture Trail to follow which will take in all 14 venues either

in one very creative day, starting in Atlantic Village and ending up on Bridgeland Street, or in stages, throughout the month of October.

● *The Culture Show runs from October 3 to November 1 throughout Bideford.*



From left: Flambeaux Jewellery, painting by Duncan Hopkins, jewellery by Kim Styles and a fascinator by The Artful Hat Company

**DAC COACHES**  
**DAY TOURS**

- SUNDAY 11TH OCTOBER**  
IKEA & Cribbs Causeway
- FRIDAY 6TH NOVEMBER**  
Bridgwater Carnival
- MONDAY 16TH NOVEMBER**  
Turkey & Tinsel - Charms of Chester (5 days)
- SATURDAY 28TH NOVEMBER**  
Christmas Shopping at Bluewater Kent
- SATURDAY 5TH DECEMBER**  
Bath Christmas Shopper-with Sherry & Mince Pies

PLEASE RING 01822 834571 FOR OUR HOLIDAYS SUCH AS WEYMOUTH, ISLE OF WIGHT & BOURNEMOUTH, LONDON THEATRE TRIPS AND MANY MORE DAY TRIPS